

Aerosol Adhesives  
Canister Adhesives  
Aircraft Assembly  
Asbestos Pipe



**Tri-Tex**  
co inc.

**Product Assembly**



**Product  
Assembly**

# Tri-Tex co inc.

At Tri-Tex co inc., we help our customers assemble a wide range of products; from steel doors to hockey sticks and paint rollers.

We also offer products to assist in the assembly of gaskets, office wall partitions, and a variety of components used in the railway industry.

You may not see the name Tri-Tex on the high-quality products you use, but we have worked extremely hard to enhance their quality.

**1995:** Combining 68 years of experience, Texall Inc. and Trichromatic Techno-Chem merge to become Tri-Tex co inc. They now total 150 employees, and one year later they receive ISO 9001 certification allowing them to export to Europe and South America.

**2001:** Tri-Tex co inc. begins construction of a new polymer plant that includes three reactors for emulsion polymer production.

**2004:** Construction division begins production of styrene-acrylic emulsion for the construction industry. (Coatings, flooring, roofing, cement admixture, PSA)

**2005:** Adhesives division specializes in polyvinyl acetate polymers for woodworking, paper and textile markets.

**2005:** Tri-Tex co inc. acquires industrial adhesive group Sealrez Inc. They count more than 14 years experience in the adhesive industry. Product lines include hot melts, polyurethanes, and water-borne and solvent-based epoxies.

**2006:** More members join the Tri-Tex co inc. family: EPOXYTECH, specializing in epoxies and urethanes for the electrical, flooring, tooling and marine industries.

**2010:** Tri-Tex co inc. is joined by Chemor, an epoxy flooring company with more than 40 years experience in this field.

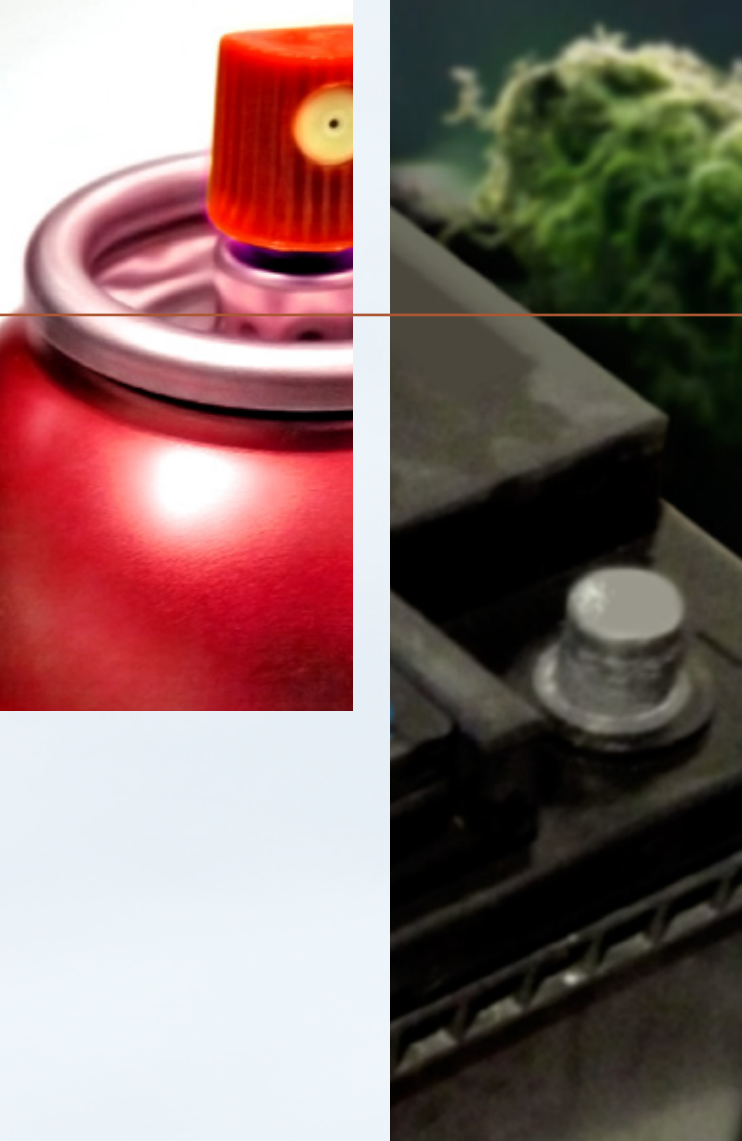
**2011:** Tri-Tex co inc. creates a new division for concrete admixture, including a hyperplasticizer from the polycarboxylate copolymer family.



Product  
Assembly



Conseil du bâtiment durable du Canada



# Product Assembly

---

## **Aerosol and Canister Adhesives**

---

### **TRITACK A6000**

Carefully selected blend of synthetic rubbers in an aerosol can.

### **TRITACK C5000**

High-performance, spray-grade contact cement adhesive available in pressurized containers. (Canister)

## **Aircraft**

---

### **4010A**

High-performance adhesive. (Aircraft standard)

### **3350**

Syntactic foam. (Aircraft standard)

### **3360**

High-performance adhesive. (Aircraft standard)

### **L-1366A**

High-performance adhesive. (Aircraft standard)

## **Asbestos Pipe**

---

### **3471A**

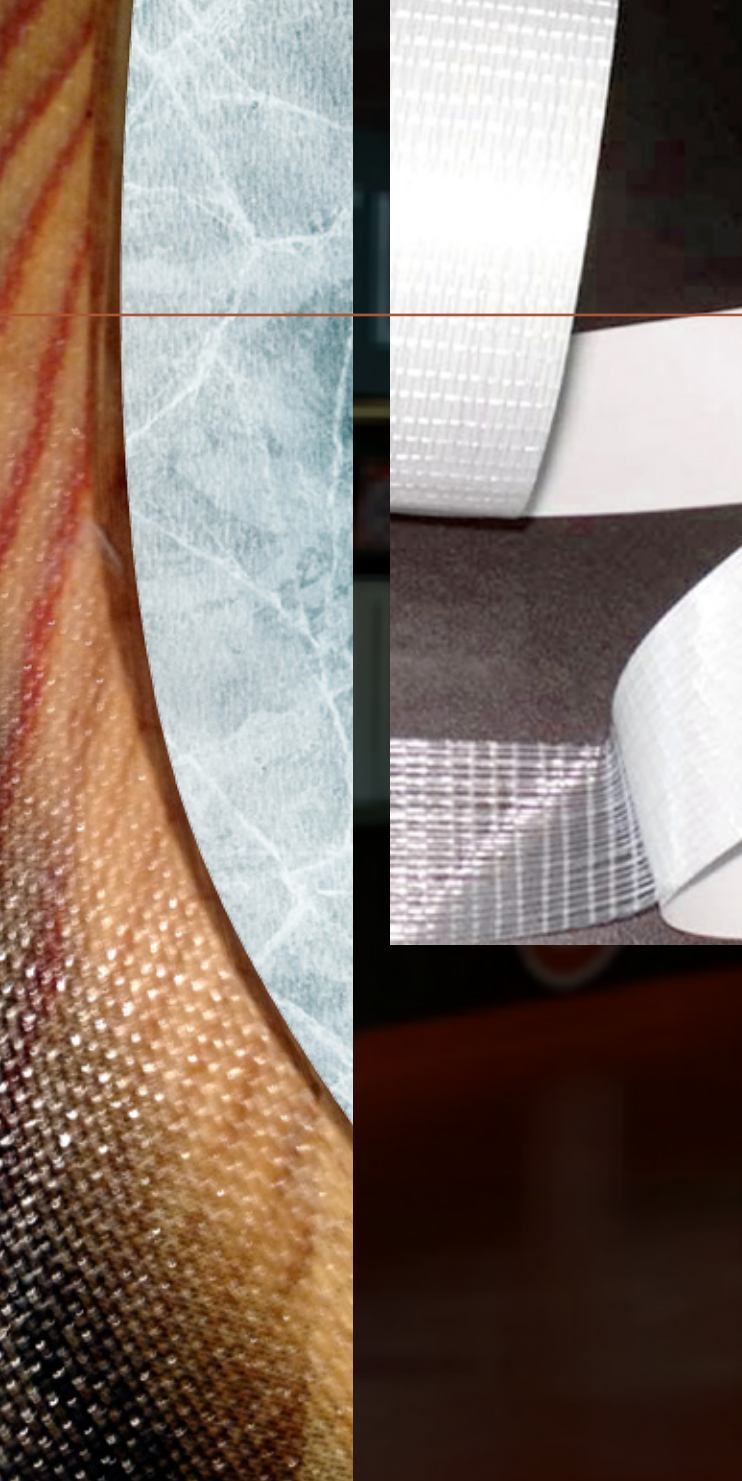
Adhesive paste for asbestos pipe.

## **Battery Sealant**

---

### **EP0174 A/B**

100% epoxy battery sealant.



## Clear Coating Epoxy

---

### **E0118AB**

Clear coating epoxy system.

### **L-1925**

Clear and flexible epoxy laminating/coating.

## Fiberglass Adhesives

---

### **0394A**

Fiberglass adhesive. (Summer grade)

### **0395A**

Fiberglass adhesive. (Winter grade)

### **E0110**

Epoxy system for fiberglass laminating.

### **E3237 A/B**

Epoxy laminating adhesive.

### **E3238 A/B**

Epoxy laminating adhesive.

### **E3297 A/B**

Epoxy coating/laminating adhesive.

### **E3313 A/B**

Epoxy coating/laminating adhesive.

### **E3316 A/B**

Epoxy coating/laminating adhesive.

### **L-1277A**

Fiberglass adhesive. (Winter grade)

### **L-1278A**

Fiberglass adhesive. (Summer grade)

# Product Assembly

## General Purpose Adhesives

### **0301A**

Fast-setting adhesive at low temperatures.

### **0355A**

General-purpose resilient adhesive. (Long gel time)

### **0375A**

General-purpose adhesive.

### **0398A**

Flexible, intermediate pot life.

### **03S10A**

Fast-setting adhesive at low temperatures.

### **3/10 GEL**

Fast-setting adhesive at low temperatures.

### **3/10 LIQUID**

Fast-setting adhesive at low temperatures.

### **3551**

General-purpose resilient adhesive.  
(Intermediate gel time)

### **3551A**

General-purpose resilient adhesive.  
(Intermediate gel time)

### **3751A**

General-purpose adhesive.

### **393**

General-purpose resilient adhesive.  
(Thixotropic, flexible)

### **E-0283 A/B**

General-purpose epoxy system.

### **E-1005-A/B**

100% solid epoxy adhesive.

### **E0077AB**

General-purpose epoxy

### **E0100**

General-purpose, 5-minute fast-setting epoxy adhesive.

### **E0102**

General-purpose, 5-minute fast-setting epoxy adhesive.

### **E0162LV A/B**

General-purpose epoxy adhesive.

### **E0230 A/B**

100% solid epoxy adhesive.

### **E0694 A/B**

100% solid epoxy adhesive.

### **E10173-2**

Curing agent.

### **E1032G**

100% solid epoxy adhesive.

### **E1052 A/B**

100% solid epoxy adhesive.

### **E3324 A/B**

100% solid epoxy adhesive.

### **E3599 A/B**

100% solid epoxy adhesive.

### **E4108**

General-purpose adhesive.  
(Low toxicity, superior physical properties).

### **E4147**

Multi-purpose adhesive.  
(Long working time, flexible mixing ratio)

### **EP0092 A/B**

Super-strength epoxy system.

### **L-1121A**

Cold cure adhesive.

### **L-1255A**

Milling blocks adhesive.

### **L-1345A**

Instant patching paste.

### **L-1425A**

Moderate temperature die plank adhesive.

### **L-1447A**

General adhesive

### **L1391A**

Custom laminating system for canoe fabrication.

### **TRITACK CC-5705**

Water-based contact cement adhesive with  
very strong bond.



### **Golf Clubs**

#### **0371A**

Golf club adhesive.

#### **0389A**

Golf club adhesive. (Low-viscosity, long gel time)

### **Metal Door Assembly**

#### **0379A**

Adhesive for doors.

#### **3791A**

Adhesive for doors. (Fast gel time)

#### **3792A**

Door adhesive. (Flame-retardant, fast gel time)

#### **3793A**

Door adhesive. (Flame-retardant, fast gel time)

#### **3860A**

Adhesive for honeycomb panels. (Flexible)

#### **3861A**

Adhesive for honeycomb panels.  
(Flexible, with microspheres)

#### **EPN0272A/B-5**

Adhesive for honeycomb panels. (Resilient, good adhesion)

### **Gasketing**

#### **U4157**

Urethane coating/sealant. (Flexible)

# Product Assembly

## Paint Roller

---

### **E-3749 A/B**

Solvent-less epoxy adhesive.

### **E0106 A/B**

Paint roller adhesive.

### **E3412 A/B M**

Solvent-less epoxy adhesive.

## Ski and Snowboard

---

### **3202A**

Ski and snowboard adhesive.  
(Flexible, intermediate pot life)

### **3203A**

Ski and snowboard adhesive.  
(Flexible, low-viscosity, intermediate pot life)

### **L-1198A**

Snowboard adhesive.

## Vinyl Laminating

---

### **E0013FR A/B**

Solvent-less epoxy laminating adhesive.

### **E0014**

Solvent-less epoxy laminating adhesive.

### **E0174 A/B**

Epoxy laminating adhesive.

### **E0239 A/B**

Solvent-less epoxy adhesive.

### **E0240 A/B**

Solvent-less epoxy adhesive.

### **E0950AB**

Solvent-less epoxy adhesive.

### **E1041 A/B**

Solvent-less epoxy laminating adhesive.

### **E1169 A/B**

Epoxy laminating adhesive.

### **E1169 A/B YELLOW**

Epoxy laminating adhesive.

### **E1169-1A/B**

Epoxy laminating adhesive.

### **E1400 A/B**

Solvent-less epoxy laminating adhesive.

### **E3419 A/B**

Solvent-less epoxy laminating adhesive.

### **E4120**

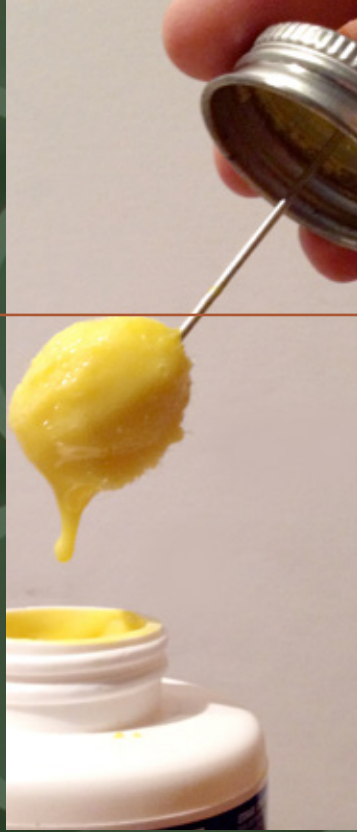
Epoxy laminating adhesive. (Fast set time)

### **EP0069AB**

Epoxy vinyl laminating adhesive.

### **EPN0950 A/B**

Solvent-less epoxy adhesive.



## **Pipe Cement Adhesives**

---

### **S-3666**

PVC pipe cement adhesive.

### **S-3667**

PVC pipe cement adhesive.

### **S-3668**

CPVC pipe cement adhesive.

### **S-3821**

ABS pipe cement adhesive.

## **Structural Adhesives**

---

### **3772**

Structural adhesive.

### **E3309 A/B**

100% solid structural epoxy adhesive.

### **E4119**

Structural resilient adhesive. (Flexible; excellent peel and shear strength, thermal shock resistance)

### **E4119A/320H1**

Structural resilient adhesive. (Flexible; excellent peel and shear strength, thermal shock resistance)





# Product Assembly

## **Wood Industry**

---

### **3771A**

Adhesive for the wood industry.  
(Non bleed-through, fast gel time)

### **3773A**

Adhesive for the wood industry.  
(Non bleed-through, fast gel time)

### **E3202 A/B**

Epoxy laminating adhesive.

### **LU-1724**

Urethane liquid patch.  
(Fast-set, machinable, stainable)

### **LU-1754**

Urethane liquid patch.  
(Fast-set, machinable, stainable)

### **LU-1783**

Urethane liquid patch.  
(Fast-set, machinable, stainable)

### **LU-1791**

Urethane liquid patch.  
(Fast-set, machinable, stainable)

### **LU-1862 (Temporary)**

Urethane liquid patch.  
(Fast-set, machinable, stainable)



### **Patching Epoxy**

---

**E0108 A/B**  
Patching epoxy.

### **Underwater Cure Adhesives**

---

**L-1321A**  
Underwater cure adhesive. (Non-corrosive)



# Product Assembly

## High-Heat Resistance

### **3651A**

High-heat resistant adhesive.

### **E-0557 A/B**

100% solid high-heat epoxy adhesive.

### **E0560 A/B**

100% solid high-heat epoxy adhesive.

### **E0794 A/B**

Tooling epoxy system.

### **E1259 A/B**

100% solid high-heat epoxy adhesive

### **E1298AB**

Casting epoxy.

### **E3432 A/B**

100% solid high-heat epoxy adhesive.

### **0169A**

Hockey stick laminating system. (Slow gel time)

### **0197A**

Hockey stick adhesive system.

### **0392A**

Reinforcing adhesive.

### **E-0068 A/B**

Epoxy laminating adhesive.

### **E0004**

Epoxy laminating adhesive.

### **E0068**

Epoxy laminating adhesive.

### **E0068A-M B**

Epoxy laminating adhesive.

### **E0089 A/B**

100% laminating adhesive/coating.

### **E0109 A/B**

Epoxy laminating adhesive.

### **E0111**

Epoxy laminating adhesive.

### **E0162**

Epoxy laminating adhesive.

### **E0252 A/B**

Epoxy laminating adhesive.

### **E0253 A/B**

Epoxy laminating adhesive.

### **E0734 A/B**

Epoxy laminating adhesive

### **E1068 A/B**

Epoxy resin.

### **E1078 A/B**

Epoxy laminating adhesive.

### **E3502 A/B**

Epoxy laminating adhesive.

### **E3804 A/B**

Epoxy laminating adhesive.

### **EP0113**

Epoxy laminating adhesive.

### **EPN-0790 A/B**

Epoxy laminating adhesive.

### **EPN0179 A/B X2**

Epoxy laminating adhesive.

### **EPN0452-4 A/B**

Epoxy laminating adhesive.

### **EPN0942**

Epoxy laminating adhesive.

### **ES0098 A/B**

Solvent-based epoxy laminating adhesive.

### **ES0157 A/B**

Epoxy laminating adhesive/coating.

### **ES1157 A/B**

Solvent-based epoxy laminating adhesive.

### **L-1427A**

Hockey stick laminating system.

TRICHROMATIC WEST, COMMERCE, CALIFORNIA, UNITED STATES

TRICHROMATIC MEXICO S. de R.L., PUEBLA, MEXIQUE

TRI-TEX USA, CHARLOTTE, NORTH CAROLINA, UNITED STATES

TRI-TEX CO INC., ST-EUSTACHE, QUEBEC, CANADA

TRICHROMATIC MISR, LE CAIRE, EGYPT



**Tri-Tex**  
co inc.



**Tri-Tex co inc.**  
1001 Industriel BLVD  
Saint-Eustache, Qc, Canada  
J7R 6C3

Toll Free: 1-800-363-2660  
Phone: 450-974-1001  
Fax: 450-974-0162  
sales@tritex.com  
www.tritex.com

**Trichromatic West**  
6070 Rickenbacker road  
Commerce, CA  
USA  
90040-3030

Phone: 323-722-0123  
Fax: 323-722-0131  
info@trichromaticwest.com

**Tri-Tex USA**  
c/o Total Distribution  
900 N Hoskin Road  
Charlotte, NC  
USA a  
28216

Phone: 1-877-881-2727  
Fax: 450-974-0162  
info@tritex.com

**Trichromatic Mexico**  
S. DE R.L. 19 SUR No 3540  
Puebla, Mexico 72410

Phone: 011 52 222 240 31 89  
Fax: 011 52 222 243 91 70  
infomexico@trichromaticwest.com